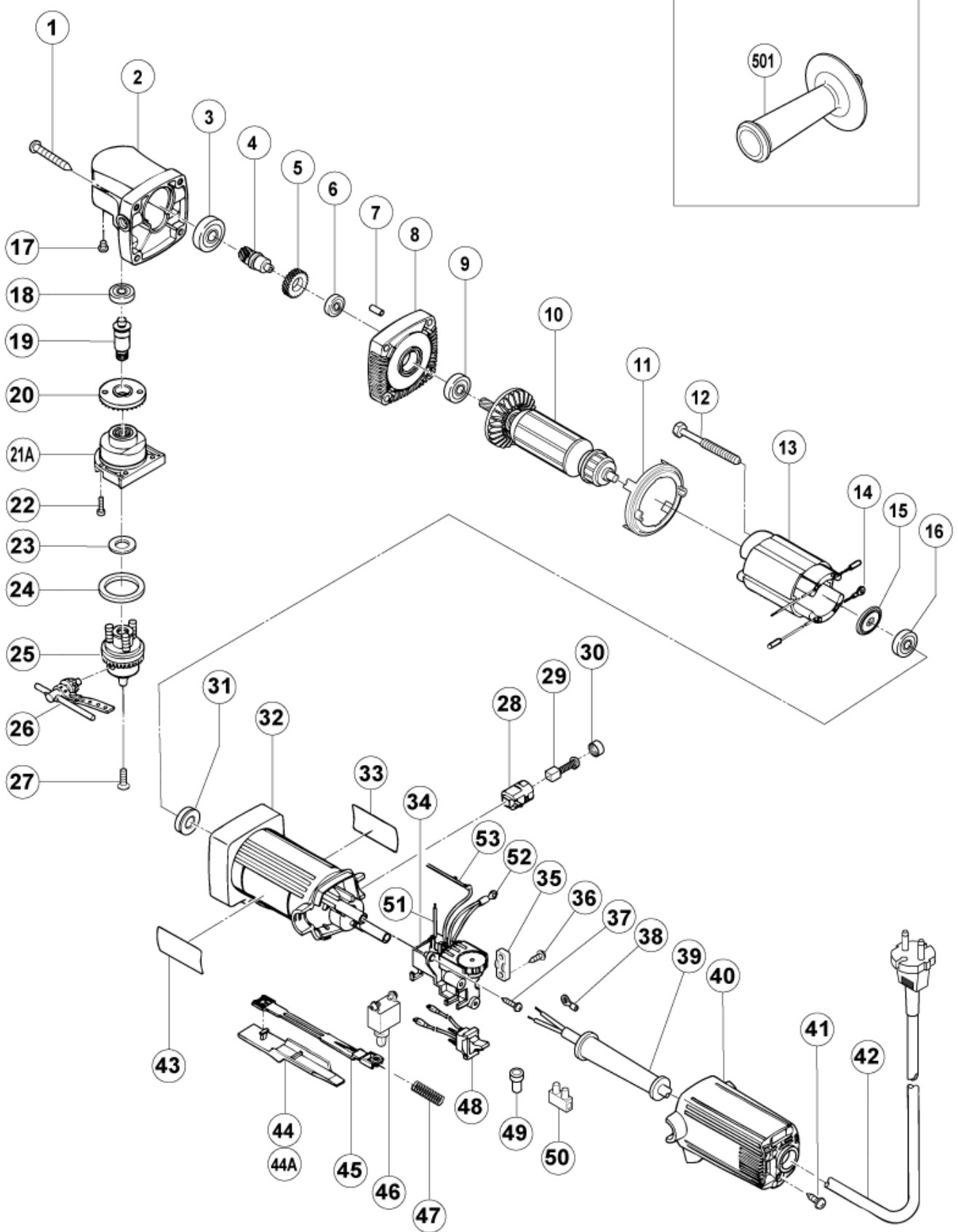


nÂ°	Artikel	Aantal gebruikt
1	316458 TAPPING SCREW D5X40 (BLACK)	4
2	318828 GEAR COVER	1
3	6001VV BALL BEARING 6001VV	1
4	318833 SECOND PINION	1
5	318834 FIRST GEAR	1
6	606ZZM BALL BEARING 606ZZMC3PS2S	1
7	931701 BEARING LOCK	1
8	318827 @ INNER COVER	1
9	608DDM BALL BEARING 608DDMC2EPS2S	1
10	360528U ARMATURE ASS'Y 110-115 VOLT	1
10	360528E ARMATURE ASS'Y 220-230 VOLT	1
10	360528F ARMATURE ASS'Y 240 VOLT	1
11	306840 FAN GUIDE	1
12	982021 HEX. HD. TAPPING SCREW D4X70	2
13	340469C STATOR ASS'Y 110-115 VOLT	1
13	340469D STATOR ASS'Y 110V-115V	1
13	340469E STATOR ASS'Y 220-230 VOLT	1
13	340469F STATOR ASS'Y 240 VOLT	1
13	340469G @ STATOR ASS'Y 220-230 VOLT	1
15	313775 DUST SEAL	1
16	626VVM BALL BEARING 626VVMC2ERPS2S	1
17	985414 FLAT FILLISTER HD. SCREW M4X10	2
18	607VVC BALL BEARING 607VVC2PS2L	1
19	318830 SPINDLE	1
20	318829 GEAR	1
21A	318831 CHUCK COVER	1
22	318832 SEAL LOCK HEX. HD BOLT M3X12	4
23	936973 FELT PACKING	1
24	943153 FELT PACKING	1
25	318835 DRILL CHUCK 10TLRD	1
26	319070 CHUCK HANDLE 10TLRD	1
27	317995 FLAT HD.SCREW M5X15 LEFT HAND	1
28	313777 BRUSH HOLDER	2
29	999021 CARBON BRUSH (1 PAIR)	2
30	936551 BRUSH CAP	2
31	309929 RUBBER BUSHING	1
32	318839 HOUSING ASS'Y	1
33	NAME PLATE	1

nÂ°	Artikel	Aantal gebruikt
33	320521 NAME PLATE	1
34	319058 CONTROLLER CIRCUIT HOLDER 110 VOLT	1
34	319059 CONTROLLER CIRCUIT HOLDER	1
34	319060 CONTROLLER CIRCUIT HOLDER	1
35	937631 CORD CLIP	1
36	984750 TAPPING SCREW (W/FLANGE) D4X16	2
37	305095 TAPPING SCREW D4X20 W/FLANGE (NEW 301653)	2
38	980063 TERMINAL	1
39	953327 CORD ARMOR D8.8	1
40	318836 TAIL COVER	1
41	307811 TAPPING SCREW D4X16 (W/FLANGE) (BLACK) (OLD 930446)	2
42	500468Z CORD	1
42	500423Z @ CORD 2,5M 2 X 1.0 H05VV-F W/PLUG 13A/250V (OLD 500223Z)	1
42	500237Z CORD 2,5M 2 X 1.0 W/O PLUG (OLD 500396Z,971517Z,971675Z)	1
42	500447Z CORD 2,5M 2 X 1.0 H05VV-F (OLD 500395Z)	1
42	500436Z CORD 2,5M 2 X 0.75 W/PLUG 13A/250V (NEW 500435Z)	1
42	930049 CORD	1
42	500409Z CORD	1
42	500439Z CORD FOR AUS (OLD 500226Z/500411Z)	1
42	500240Z CORD FOR USA/CAN	1
43	HITACHI LABEL	1
44A	330153 SLIDE KNOB	1
44	318825 SLIDE KNOB	1
45	318826 SLIDE BAR	1
46	314603 SWITCH (1P SOLDER TYPE)	1
46	955509 SWITCH (1P SOLDER TYPE)	1
47	314429 SPRING	1
48	319061 REVERSING SWITCH	1
48	318838 REVERSING SWITCH	1
49	959140 CONNECTOR 50091 (10 PCS.)	2
50	938307 PILLAR TERMINAL	1
51	325566 NOISE SUPPRESSOR	1
51	994273 NOISE SUPPRESSOR	1
52	930800 TERMINAL M4.0 (100 PCS) (NEW 930804)	1
53	314854 EARTH TERMINAL	1
501	956633 SIDE HANDLE	1



Rev.4

形名
D10YB