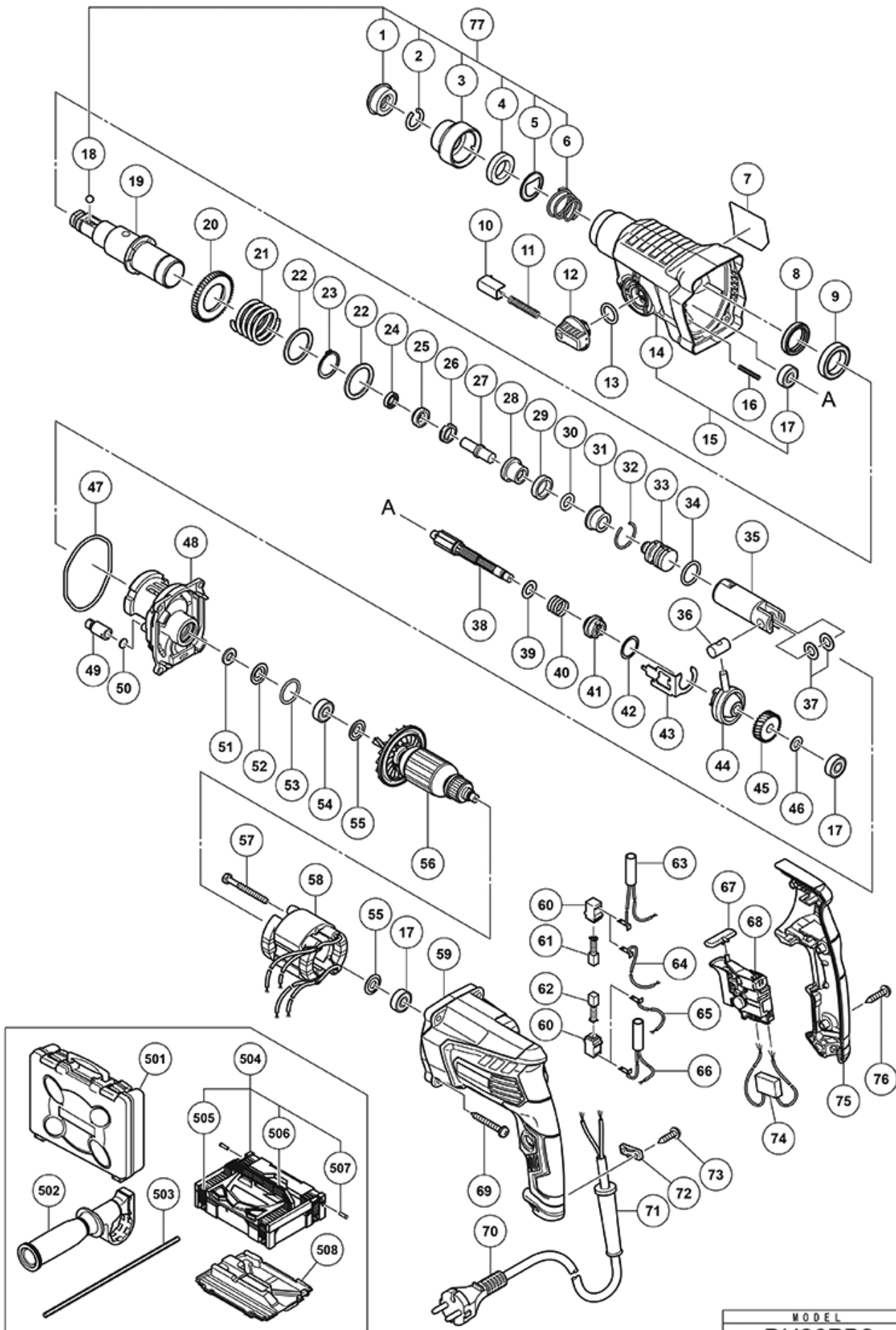


nÂ°	Artikel	Aantal gebruikt
1	306345 FRONT CAP	1
2	306340 STOPPER RING	1
3	374436 GRIP NEW	1
4	374437 BALL HOLDER NEW	1
5	374435 HOLDER PLATE NEW	1
6	322812 HOLDER SPRING	1
8	335259 OIL SEAL	1
9	6805BB BALL BEARING 6805 NEW	1
10	322789 PUSHING BUTTON	1
11	317223 PUSHING SPRING	1
12	334011 CHANGE LEVER	1
13	878885 O-RING (S-18)	1
14	374620 GEAR COVER NEW	1
15	375017 GEAR COVER ASS'Y NEW	1
16	335800 SPRING (E)	1
17	608VVM BALL BEARING 608VVC2PS2L	3
18	335300 STEEL BALL D7.0 (10 PCS)	1
19	374426 CYLINDER NEW	1
20	335265 SECOND GEAR	1
21	374430 SPRING (B) NEW	1
22	301679 WASHER (A)	2
24	335262 OIL SEAL (A)	1
25	374431 HAMMER HOLDER (B) NEW	1
26	374427 HOLDER SLEEVE NEW	1
27	374432 SECOND HAMMER NEW	1
28	374429 HAMMER HOLDER (A) NEW	1
29	322805 DAMPER (A)	1
30	322808 O-RING (C)	1
31	324524 DAMPER HOLDER (OLD 322806)	1
32	322807 STOPPER RING	1
33	374443 STRIKER NEW	1
34	372816 O-RING NEW	1
35	372817 PISTON NEW	1
36	335793 PISTON PIN	1
37	335794 PISTON WASHER	2
38	374621 SECOND SHAFT NEW	1
39	335251	1
40	323182 CLUTCH SPRING	1

nÂ°	Artikel	Aantal gebruikt
41	375022 CLUTCH NEW	1
42	331315 WASHER	1
43	335252 CHANGE PLATE	1
44	335249	1
45	374441 FIRST GEAR NEW	1
46	374442 BEARING WASHER NEW	1
47	335245 O-RING D72.2	1
48	374433 INNER COVER NEW	1
49	334008 AIR CAP	1
50	324543 FELT PACKING (A)	1
51	322816 FELT PACKING	1
52	322818 PACKING WASHER	1
53	876796 O-RING (P-22)	1
54	608DDM BALL BEARING 608DDMC2EPS2S	1
55	982631 WASHER (A)	2
56	361106E ARMATURE (A) 220-230 VOLT NEW	1
56	361106C ARMATURE (A) 110 VOLT NEW	1
56	361106D ARMATURE (A) 120 VOLT NEW	1
56	361106F ARMATURE (A) 240 VOLT NEW	1
57	981824 HEX.HD. TAPPING SCREW D4X45	2
58	341028K STATOR (A) 220-230 VOLT NEW	1
58	341028C STATOR (A) 110 VOLT (W/CR) NEW	1
58	341028H STATOR (A) 110 VOLT NEW	1
58	341028L STATOR (A) 240 VOLT NEW	1
58	341028D STATOR (A) 120V	1
59	374616 HOUSING (A) NEW	1
59	374616M HOUSING (A)	1
60	955203 BRUSH HOLDER	2
61	999041 CARBON BRUSH (1 PAIR)	1
62	999072 CARBON BRUSH A.S. TYPE (OLD 999080)	1
63	374615 CHOKE COIL (BROWN) NEW	1
64	374613 INTERNAL WIRE (BROWN)	1
65	374612 INTERNAL WIRE (BLUE)	1
66	374614 CHOKE COIL (BLUE) NEW	1
67	322853 PUSHING BUTTON	1
68	374610 SWITCH 220-240 VOLT NEW	1
68	374611 SWITCH 100-127 VOLT NEW	1
69	301654 TAPPING SCREW D5X35 (W/FLANGE)	4

nÂ°	Artikel	Aantal gebruikt
70	500390Z CORD 5M 2 X 1.5 FOR HOL (NEW 714520)	1
70	500239Z @ CORD FOR THA	0
70	500424Z @ CORD FOR SINZ KUW	1
70	500440Z CORD 5M 2 X 1,0 W/PLUG 13A/250V FOR GBR	1
70	500249Z CORD	1
70	323974 CORD	1
70	500496Z CORD	1
71	953327 CORD ARMOR D8.8	1
71	938051 CORD ARMOR D10.1	1
72	937631 CORD CLIP	1
73	984750 TAPPING SCREW (W/FLANGE) D4X16	2
74	930039 NOISE SUPPRESSOR	1
75	374617 HANDLE COVER (A) NEW	1
76	301653 TAPPING SCREW (W/FLANGE) D4X20 (BLACK)	3
77	375363 GRIP SET NEW	1
501	374619 PLASTIC CARRYING CASE NEW	1
502	374447 SIDE HANDLE ASS'Y NEW	1
503	303709 DEPTH GAUGE	1
503	310331 DEPTH GAUGE	1
504	337739 CASE ASS'Y (STACKABLE)	1
505	336472 LATCH	4
506	336473 HANDLE (HSC) NEW	1
507	336474 HINGE	2
508	337741 INNER TRAY	1
601	306885 DUST COLLECTOR (B) ASS'Y	1
602	986802 DUST COLLECTOR ASS'Y	1
603	986803 @ DUST COVER	1
604	986804 @ SEAL COVER NEW	1
605	948310 RETAINING RING FOR D30 SHAFT	1
606	958063 @ WASHER (OLD 958063P)	1
607	959150 STEEL BALL D6.35 (10 PCS.)	19
608	986805 @ OUTER RACE NEW	1
609	986806 SOCKET	1
610	306910 SOCKET ADAPTOR (B)	1
611	971787 DUST CUP	1
612	931844 STOPPER	1
632	335781 GREASE FOR ROTARY HAMMER (500G)	1
633	335782 GREASE FOR ROTARY HAMMER (60G)	1



MODEL  
DH26PB2

Rev.2  
27.6.2019