

nÂ°	Artikel	Aantal gebruikt
1	322239 FRONT CAP	1
2	306340 STOPPER RING	1
3	324527 GRIP	1
4	324528 BALL HOLDER (OLD 322810)	1
5	324526 HOLDER PLATE (OLD 322811)	1
6	322812 HOLDER SPRING	1
7	335258 GEAR COVER	1
8	NAME PLATE	1
9	335259 OIL SEAL	1
10	335260 BALL BEARING 6805DD	1
11	322789 PUSHING BUTTON	1
12	334011 CHANGE LEVER	1
13	317223 PUSHING SPRING	1
14	878885 O-RING (S-18)	1
15	HITACHI LABEL	1
16	335800 SPRING (E)	1
17	608VVM BALL BEARING 608VVC2PS2L	3
18	335250 BEARING WASHER	2
19	335300 STEEL BALL D7.0 (10 PCS)	1
20	335261 CYLINDER	1
21	335264 PIN D2.5	4
22	335263 CYLINDER CLUTCH	1
23	335265 SECOND GEAR	1
24	335266 SPRING (A)	1
25	301679 WASHER (A)	2
27	335262 OIL SEAL (A)	1
28	335268 HAMMER HOLDER (C)	1
29	335795 SLEEVE (FW)	1
30	335269 SECOND HAMMER	1
31	335267 HAMMER HOLDER (A)	1
32	322805 DAMPER (A)	1
33	322808 O-RING (C)	1
34	324524 DAMPER HOLDER (OLD 322806)	1
35	322807 STOPPER RING	1
36	335246 STRIKER	1
37	335247 O-RING D17	1
38	335255 PISTON	1
39	335793 PISTON PIN	1

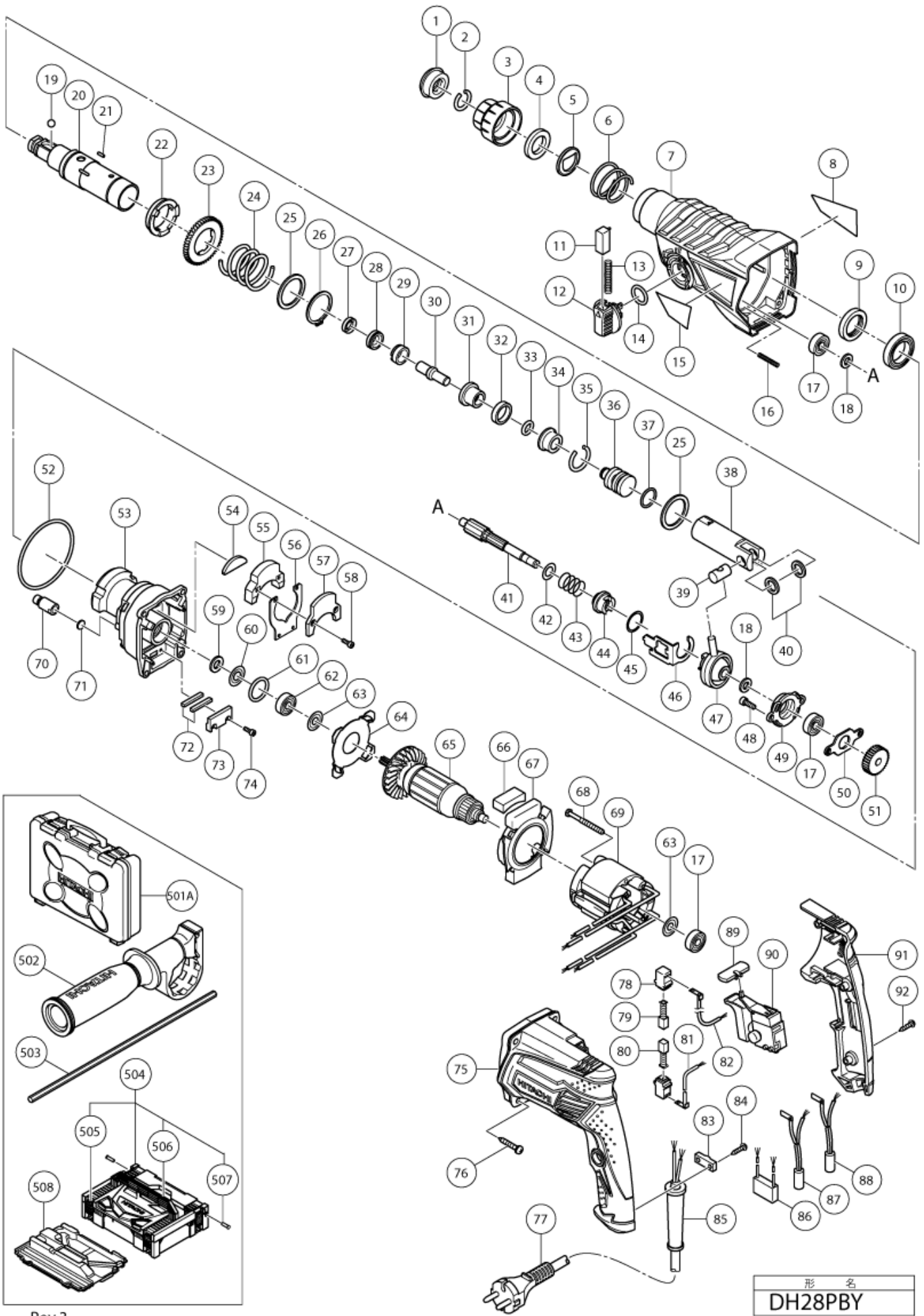
nÂ°	Artikel	Aantal gebruikt
40	335794 PISTON WASHER	2
41	335248	1
42	335251	1
43	323182 CLUTCH SPRING	1
44	335254 CLUTCH	1
45	331315 WASHER	1
46	335252 CHANGE PLATE	1
47	335249	1
48	990079 SEAL LOCK HEX. SOCKET HD. BOLT M5X16	2
49	335270 BEARING HOLDER	1
50	335271 BEARING COVER	1
51	335253 FIRST GEAR	1
52	335245 O-RING D72.2	1
53	335798	1
54	335285 WEIGHT DAMPER (A)	1
55	335280 WEIGHT (A)	1
56	335282	1
57	335281 WEIGHT (B)	1
58	325241 SEAL LOCK HEX. SOCKET HD. BOLT M3X8	2
59	322816 FELT PACKING	1
60	322818 PACKING WASHER	1
61	876796 O-RING (P-22)	1
62	608DDM BALL BEARING 608DDMC2EPS2S	1
63	982631 WASHER (A)	2
64	335279 COVER PLATE	1
65	360961E ARMATURE 220-230 VOLT	1
65	360914F ARMATURE 240V	1
65	360961U ARMATURE ASS'Y 110-127 VOLT	1
66	335286 WEIGHT DAMPER (B)	1
67	335244 FAN GUIDE	1
68	961672 HEX.HD. TAPPING SCREW D4X50	2
69	340850C STATOR 110-127 VOLT	1
69	340850F STATOR 240V	1
69	340827C STATOR 110V	1
69	340850E STATOR 220-230 VOLT	1
70	334008 AIR CAP	1
71	324543 FELT PACKING (A)	1
72	335284 SPRING DAMPER	2

nÂ°	Artikel	Aantal gebruikt
73	335283 SPRING HOLDER	1
74	983162 SEAL LOCK HEX. SOCKET HD. BOLT M4X12	2
75	335241 HOUSING	1
76	301654 TAPPING SCREW D5X35 (W/FLANGE)	4
77	500465Z CORD 4M 2 X 1.0 H07RN-F W/PLUG 16A CEE FORM 2P+E 110 VOLT	1
77	500235Z CORD 5M 2 X 1.0 FOR EUROPE (NEW 714500)	1
77	500390Z CORD 5M 2 X 1.5 FOR HOL (NEW 714520)	1
77	500409Z CORD	1
77	500440Z CORD 5M 2 X 1,0 W/PLUG 13A/250V FOR GBR	1
77	500239Z @ CORD FOR THA	1
77	500446Z CORD FOR GBR 230V	1
77	500391Z CORD FOR SWISS	1
77	500424Z @ CORD FOR SINZ KUW	1
78	955203 BRUSH HOLDER	2
79	999041 CARBON BRUSH (1 PAIR)	1
80	999072 CARBON BRUSH A.S. TYPE (OLD 999080)	1
81	324538 INTERNAL WIRE (A) BLUE	0
82	324537 INTERNAL WIRE (A) BROWN	0
83	937631 CORD CLIP	1
84	984750 TAPPING SCREW (W/FLANGE) D4X16	2
85	938051 CORD ARMOR D10.1	1
85	953327 CORD ARMOR D8.8	1
86	930039 NOISE SUPPRESSOR	0
87	335857 CHOKE COIL (A) BROWN	0
88	324551 CHOKE COIL (A) BLEU	0
89	322853 PUSHING BUTTON	1
90	335796 SWITCH (OLD 331454)	1
90	335256 SWITCH (1P PILLAR TYPE) (NEW 337388)	0
91	335242 HANDLE COVER	1
92	301653 TAPPING SCREW (W/FLANGE) D4X20 (BLACK)	3
501A	307786 CASE	1
502	335273 SIDE HANDLE	1
503	303709 DEPTH GAUGE	1
504	336471 CASE ASS'Y (STACKABLE)	1
505	336472 LATCH	4
506	318601 HANDLE	1
507	336474 HINGE	2
508	338872 INNER TRAY	1

nÂ°	Artikel	Aantal gebruikt
601	306885 DUST COLLECTOR (B) ASS'Y	1
602	986802 DUST COLLECTOR ASS'Y	1
603	986803 @ DUST COVER	1
604	986804 @ SEAL COVER NEW	1
605	948310 RETAINING RING FOR D30 SHAFT	1
606	958063 @ WASHER (OLD 958063P)	1
607	959150 STEEL BALL D6.35 (10 PCS.)	1
608	986805 @ OUTER RACE NEW	1
609	986806 SOCKET	1
610	306910 SOCKET ADAPTOR (B)	1
611	971787 DUST CUP	1
612	310778 STOPPER	1
613	321814 DRILL CHUCK 13VLRB-D	1
614	331966 FLAT HD. SCREW (LEFT HAND) M6X20	1
615	321813 DRILL CHUCK 13VLD-D	1
616	971511Z BIT NO.2.25L (NEW 751151)	1
617	971512Z + DRIVER BIT (A) NO.3 25L	1
618	944477 COTTER	1
619	982684 CENTER PIN (A) 109L FOR CORE BIT D32-38	1
620	982685 CENTER PIN (B) 104L FOR CORE BIT D45-90	1
621	982672 CORE BIT (A) 25MM	1
622	982673 CORE BIT (A) 29MM	1
623	982674 CORE BIT (A) 32MM	1
624	982686 GUIDE PLATE (FOR CORE BIT 32MM)	1
625	982675 CORE BIT (A) 35MM	1
626	982687 GUIDE PLATE FOR CORE BIT 35MM (DISCON)	1
627	982676 CORE BIT (A) 38MM	1
628	982688 GUIDE PLATE (FOR CORE BIT 38MM)	1
629	982677 CORE BIT (B) 45MM	1
630	982689 GUIDE PLATE (FOR CORE BIT 45MM)	1
631	982678 CORE BIT (B) 50MM	1
632	982690 GUIDE PLATE (FOR CORE BIT 50MM)	1
633	971794 ANCHOR SETTING ADAPTER A W1/4" (MANUAL)	1
634	971795 ANCHOR SETTING ADAPTER A W5/16" (MANUAL)	1
635	971796 ANCHOR SETTING ADAPTER A W3/8" (MANUAL)	1
636	971797 ANCHOR SETTING ADAPTER A W1/2" (MANUAL)	1
637	971798 ANCHOR SETTING ADAPTER A W5/8" (MANUAL)	1
638	971799 ANCHOR SETTING ADAPTER B W1/4" (MANUAL)	1

nÂ°	Artikel	Aantal gebruikt
639	971800 ANCHOR SETTING ADAPTER B W5/16" (MANUAL)	1
640	971801 ANCHOR SETTING ADAPTER B W3/8" (MANUAL)	1
641	971802 ANCHOR SETTING ADAPTER B W1/2" (MANUAL)	1
642	971803 ANCHOR SETTING ADAPTER B W5/8" (MANUAL)	1
643	944460 TAPER SHANK DRILL BIT D11X100	1
644	944461 TAPER SHANK DRILL BIT D12.3X110	1
645	993038 TAPER SHANK DRILL BIT D12.7X110	1
647	944500 TAPER SHANK DRILL BIT D14.5X110	1
649	944464 TAPER SHANK DRILL BIT D21.5X140	1
650	320859 SYRINGE (BLOW-OUT BULB TYPE)	1
651	303046 BULL POINT (SDS+) 250MM(ROUND SHANK TYPE)	1
652	303044 CHEMICAL ANCHOR ADAPTER (SDS+)12.7MMX90L	1
653	303045 CHEMICAL ANCHOR ADAPTER(SDS+)19.0MMX100L	1
654	981122 SPECIAL SCREW M6X22	1
655	930515 CHUCK WRENCH 10G	1
656	302976 ANCHOR SETTING ADAPTER A (SDS+)W1/4X260L	1
657	302975 ANCHOR SETTING ADAPTER A(SDS+)W5/16X260L	1
658	303621 ANCHOR SETTING ADAPTER A (SDS+)W3/8X160L	1
659	302974 ANCHOR SETTING ADAPTER A (SDS+)W3/8X260L	1
660	302979 ANCHOR SETTING ADAPTER B (SDS+)W1/4X260L	1
661	302978 ANCHOR SETTING ADAPTER B(SDS+)W5/16X260L	1
662	303622 ANCHOR SETTING ADAPTER B (SDS+)W3/8X160L	1
663	302977 ANCHOR SETTING ADAPTER B (SDS+)W3/8X260L	1
664	303332 HAMMER DRILL CHUCK SET 13MM	1
665	303334 CHUCK HANDLE	1
666	303335 RUBBER CAP	1
667	303617 TAPER SHANK ADAPTER (SDS PLUS) NO.1	1
668	303618 TAPER SHANK ADAPTER (SDS PLUS) NO.2	1
669	303619 A-TAPER SHANK ADAPTER (SDS PLUS)	1
670	303620 B-TAPER SHANK ADAPTER (SDS PLUS)	1
671	303625 CORE BIT SHANK (SDS PLUS) 25-38MM 105L	1
672	303626 CORE BIT SHANK (SDS PLUS) 25-38MM 300L	1
673	303627 CORE BIT SHANK (SDS PLUS) 45-90MM 300L	1
674	303624 CHUCK ADAPTER (D) (SDS PLUS)	1
675	321825 DRILL CHUCK AND ADAPTER SET	1
676	303623 CHUCK ADAPTER (G) (SDS PLUS)	1
677	306370 ADAPTER FOR SLENDER SHAFT (SDS PLUS)	1
678	335781 GREASE FOR ROTARY HAMMER (500G)	1

nÂ°	Artikel	Aantal gebruikt
679	335782 GREASE FOR ROTARY HAMMER (60G)	1



形名
DH28PBY

Rev.3