

nÂ°	Artikel	Aantal gebruikt
1	323078 FRONT CAP	1
2	323077 GRIP	1
3	306340 STOPPER RING	1
4	323076 BALL HOLDER	1
5	323075 RETAINER SPRING	1
6	325668 WASHER (D)	1
7	306993 RETAINING RING FOR DH15DV SHAFT	1
8	321313 SEAL LOCK HEX. SOCKET HD. BOLT M6X22	4
9	325651 CYLINDER CASE	1
10	980744 O-RING (S-55)	1
11	320324 OIL SEAL	1
12	320325 DAMPER (B)	1
13	320326 DAMPER WASHER	1
14	326304 BALL BEARING 6005DDCMPS2L	1
15	948227 RETAINING RING FOR D47 HOLE	1
16	325667 SLEEVE	1
17	959156 STEEL BALL D7.0 (10 PCS)	2
18	325652 RETAINER SLEEVE	1
19	325658 NEEDLE PIN	4
20	326301 SLEEVE (C)	1
21	313420 RETAINING RING D38	1
23	325653 SECOND HAMMER	1
24	323059 DAMPER WASHER	1
25	323060 DAMPER	1
26	323061 DAMPER HOLDER	1
27	323062 STOPPER RING	1
28	326302 DAMPER HOLDER (B)	1
29	326303 DAMPER (C)	1
30	326300 SLIDE RING	1
31	325660 STRIKER	1
32	319577 O-RING (I.D.19.2)	2
33	325656 SLIDE SLEEVE (B)	1
34	325655 SLIDE SLEEVE (A)	1
35	325664 CLUTCH SPRING	1
36	325654 CYLINDER	1
37	325661 WASHER (C)	1
38	325662 LOCK SPRING	1
39	325663 LOCK SLEEVE	1

nÂ°	Artikel	Aantal gebruikt
40	325665 CLUTCH	1
41	325666 BEVEL GEAR	1
43	319581 PISTON PIN	1
44	319580 PISTON	1
45	319585 CONNECTING ROD	1
46	313078 SIDE HANDLE	1
47	325672 HANDLE HOLDER	1
48	320973 STOPPER ROD	1
49	313080 HANDLE BOLT	1
50	998471 HEX.SOCKET HD.BOLT M5X12	1
51	325677 HOOD	1
53	HITACHI LABEL	1
54	986940 SEAL LOCK HEX. SOCKET HD. BOLT M6X45	4
56	983162 SEAL LOCK HEX. SOCKET HD. BOLT M4X12	5
57A	331545 CHANGE LEVER (OLD 321309)	1
58	321312 PIN D2X10	1
59	325671 LEVER HOLDER	1
60	948391 RETAINING RING FOR D40 HOLE	1
61	325670 LEVER SHAFT	1
62	980948 O-RING	1
63	321310 LEVER SPRING	1
64	321311 PUSHING BUTTON	1
66	971736 WASHER (B)	1
67	360768U ARMATURE ASS'Y 120V	1
67	360768C ARMATURE 110 VOLT	1
67	360768E ARMATURE 220-230 VOLT	1
67	360768F ARMATURE 240V	1
68	982631 WASHER (A)	1
70	323083 FAN GUIDE	1
71	953121 HEX.HD. TAPPING SCREW D5X50	2
72	340672G STATOR ASS'Y 120V	1
72	340672J STATOR ASS'Y 240V	1
72	340672E STATOR ASS'Y 220-230 VOLT	1
72	340672H STATOR ASS'Y 220V-230V	1
72	340672C STATOR ASS'Y 110 VOLT	1
72	340672F STATOR ASS'Y 240V	1
72	340672K STATOR ASS'Y 110V	1
73	930703 BRUSH TERMINAL	2

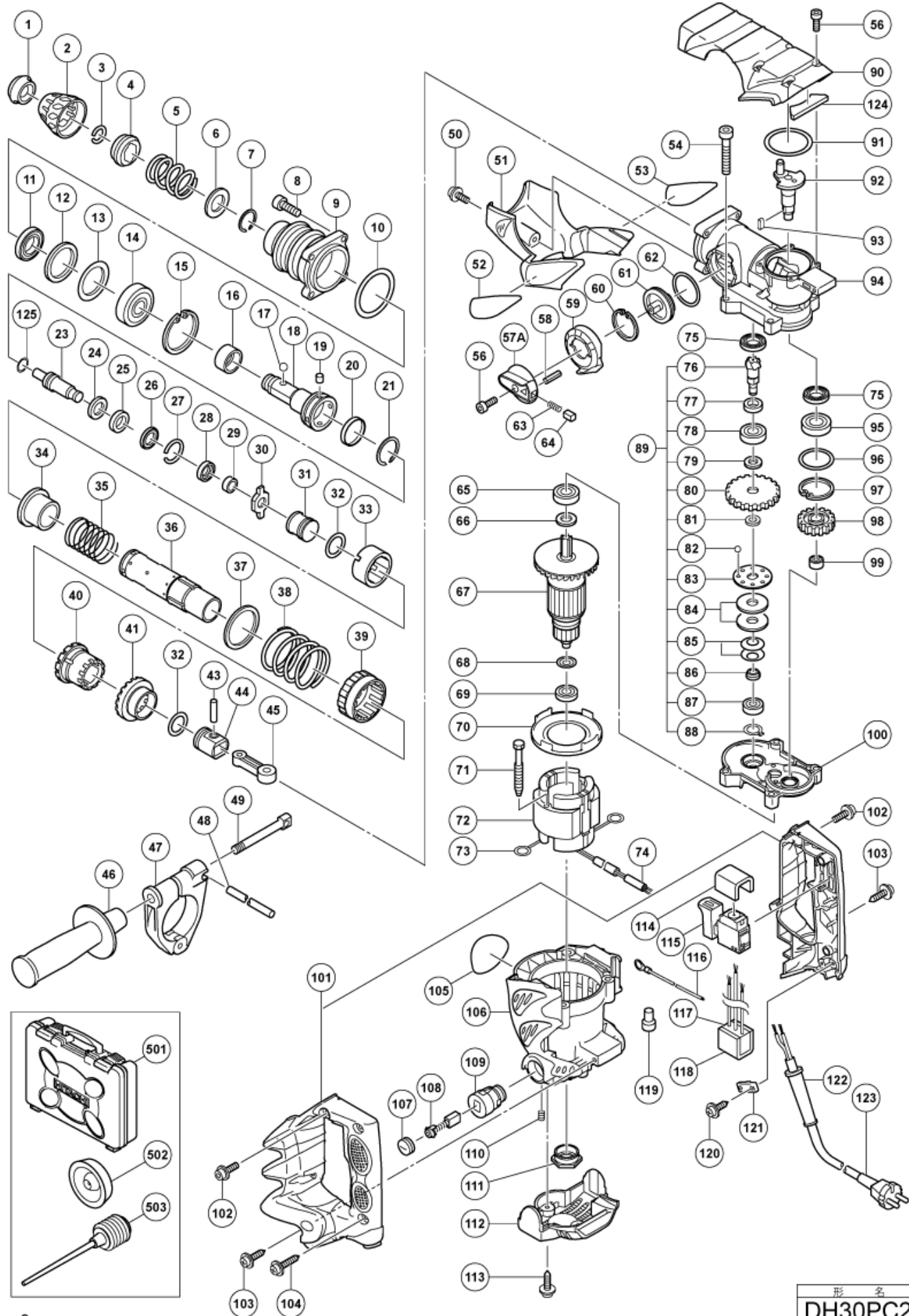
nÂ°	Artikel	Aantal gebruikt
74	321322 VINYL TUBE	1
75	981851 OIL SEAL (B)	2
76	325647 BEVEL PINION	1
77	325648 COLLAR	1
78	6001DD BALL BEARING 6001DDUCMPS2S (OLD 980925)	1
79	992503 WASHER	1
80	325649 SECOND GEAR	1
81	971087 STOPPER WASHER	1
82	959155 STEEL BALL D3.97 (10 PCS.)	8
83	992916 CLUTCH PLATE	1
84	992926 SPRING PLATE	2
85	980877 BELLEVILLE SPRING	2
86	325650 BUSHING	1
87	608VVM BALL BEARING 608VVC2PS2L	1
88	940079 RETAINING RING FOR D8 SHAFT	1
89	325646 SLIP CLUTCH ASS'Y	1
90	325669 CRANK CASE COVER	1
91	980715 O-RING (S-48)	1
92	325644 CRANK SHAFT	1
93	944109 FEATHER KEY 3X3X8	1
94	325643 CRANK CASE	1
95	6002DD BALL BEARING 6002DDUCMPS2S	1
96	872767 O-RING (S-32)	1
97	948001 RETAINING RING D32 HOLE	1
98	325645 FIRST GEAR	1
99	939299 NEEDLE BEARING (M661)	1
100	325674 GEAR COVER	1
101	325680 HANDLE (A+B) SET	1
102	994192 HEX.SOCKET HD.BOLT	2
103	302089 TAPPING SCREW (W/FLANGE) D5X20 (BLACK)	2
104	307028 TAPPING SCREW (W/FLANGE) D4X25 (BLACK)	3
105	NAME PLATE	1
106	325673 HOUSING ASS'Y	1
107	945161 BRUSH CAP	2
108	999073 CARBON BRUSH A.S. TYPE (OLD 981612Z)	2
109	958900 BRUSH HOLDER	2
110	938477 HEX.SOCKET SET SCREW M5X8	2
111	310111 BEARING BUSH (B)	1

nÂ°	Artikel	Aantal gebruikt
112	323085 TAIL COVER	1
113	307811 TAPPING SCREW D4X16 (W/FLANGE) (BLACK) (OLD 930446)	2
115	325675 SWITCH (2P PILLAR TYPE)	1
116	994190 INTERNAL WIRE	0
117	994273 NOISE SUPPRESSOR	0
118	317492 SUPPORT (B)	1
119	959140 CONNECTOR 50091 (10 PCS.)	1
120	984750 TAPPING SCREW (W/FLANGE) D4X16	2
121	960266 CORD CLIP	1
122	938051 CORD ARMOR D10.1	1
122	953327 CORD ARMOR D8.8	1
123	500440Z CORD 5M 2 X 1,0 W/PLUG 13A/250V FOR GBR	1
123	500446Z CORD FOR GBR 230V	1
123	500447Z CORD 2,5M 2 X 1.0 H05VV-F (OLD 500395Z)	1
123	500235Z CORD 5M 2 X 1.0 FOR EUROPE (NEW 714500)	1
123	500477Z CORD	1
123	500424Z @ CORD FOR SINZ KUW	1
123	500390Z CORD 5M 2 X 1.5 FOR HOL (NEW 714520)	1
123	500391Z CORD FOR SWISS	1
123	500249Z CORD	1
123	500439Z CORD FOR AUS (OLD 500226Z/500411Z)	1
123	500239Z @ CORD FOR THA	1
123	500454Z CORD 5M 2 X1.0 HO7RN-F (W/O PLUG)	1
123	500486Z CORD	1
123	500457Z CORD	1
124	326651 FELT PACKING	1
125	323058 O-RING (C)	1
501	325679 CASE	1
502	971787 DUST CUP	1
503	318085 SYRINGE (BELLOWS TYPE)	1
601	303046 BULL POINT (SDS+) 250MM(ROUND SHANK TYPE	1
602	303044 CHEMICAL ANCHOR ADAPTER (SDS+)12.7MMX90L	1
603	303045 CHEMICAL ANCHOR ADAPTER(SDS+)19.0MMX100L	1
604	303334 CHUCK HANDLE	1
605	302976 ANCHOR SETTING ADAPTER A (SDS+)W1/4X260L	1
606	930515 CHUCK WRENCH 10G	1
607	302975 ANCHOR SETTING ADAPTER A(SDS+)W5/16X260L	1
608	303621 ANCHOR SETTING ADAPTER A (SDS+)W3/8X160L	1

nÂ°	Artikel	Aantal gebruikt
609	302974 ANCHOR SETTING ADAPTER A (SDS+)W3/8X260L	1
610	302979 ANCHOR SETTING ADAPTER B (SDS+)W1/4X260L	1
611	302978 ANCHOR SETTING ADAPTER B(SDS+)W5/16X260L	1
612	303622 ANCHOR SETTING ADAPTER B (SDS+)W3/8X160L	1
613	302977 ANCHOR SETTING ADAPTER B (SDS+)W3/8X260L	1
614	303617 TAPER SHANK ADAPTER (SDS PLUS) NO.1	1
615	303618 TAPER SHANK ADAPTER (SDS PLUS) NO.2	1
616	303619 A-TAPER SHANK ADAPTER (SDS PLUS)	1
617	303620 B-TAPER SHANK ADAPTER (SDS PLUS)	1
618	981122 SPECIAL SCREW M6X22	1
619	303627 CORE BIT SHANK (SDS PLUS) 45-90MM 300L	1
620	303625 CORE BIT SHANK (SDS PLUS) 25-38MM 105L	1
621	303626 CORE BIT SHANK (SDS PLUS) 25-38MM 300L	1
622	303624 CHUCK ADAPTER (D) (SDS PLUS)	1
623	321825 DRILL CHUCK AND ADAPTER SET	1
624	303623 CHUCK ADAPTER (G) (SDS PLUS)	1
625	321814 DRILL CHUCK 13VLRB-D	1
626	995344 FLAT HD.SCREW M6X25 (A) (LEFT HAND) (NEW 744087)	1
627	321813 DRILL CHUCK 13VLD-D	1
628	980927 GREASE FOR IMPACT DRILL (FG-6A) (500G)	1
629	981840 GREASE (FG-6A) (30G)	1
630	308471 GREASE FOR HAMMER DRILL (70G)	1
631	971511Z BIT NO.2.25L (NEW 751151)	1
632	971512Z + DRIVER BIT (A) NO.3 25L	1
633	944477 COTTER	1
634	982684 CENTER PIN (A) 109L FOR CORE BIT D32-38	1
635	982685 CENTER PIN (B) 104L FOR CORE BIT D45-90	1
636	315921 ADAPTER (A) FOR HAMMER DRILL	1
637	982672 CORE BIT (A) 25MM	1
638	982673 CORE BIT (A) 29MM	1
639	982674 CORE BIT (A) 32MM	1
640	982686 GUIDE PLATE (FOR CORE BIT 32MM)	1
641	982675 CORE BIT (A) 35MM	1
642	982687 GUIDE PLATE FOR CORE BIT 35MM (DISCON)	1
643	982676 CORE BIT (A) 38MM	1
644	982688 GUIDE PLATE (FOR CORE BIT 38MM)	1
645	982677 CORE BIT (B) 45MM	1
646	982689 GUIDE PLATE (FOR CORE BIT 45MM)	1

nÂ°	Artikel	Aantal gebruikt
647	982678 CORE BIT (B) 50MM	1
648	982690 GUIDE PLATE (FOR CORE BIT 50MM)	1
649	982679 CORE BIT (B) 65MM	1
650	982691 GUIDE PLATE (FOR CORE BIT 65MM)	1
651	982680 CORE BIT (B) 80MM	1
652	982692 GUIDE PLATE (FOR CORE BIT 80MM)	1
653	982681 CORE BIT (B) 90MM	1
654	982693 GUIDE PLATE (FOR CORE BIT 90MM)	1
655	971794 ANCHOR SETTING ADAPTER A W1/4" (MANUAL)	1
656	971795 ANCHOR SETTING ADAPTER A W5/16" (MANUAL)	1
657	971796 ANCHOR SETTING ADAPTER A W3/8" (MANUAL)	1
658	971797 ANCHOR SETTING ADAPTER A W1/2" (MANUAL)	1
659	971798 ANCHOR SETTING ADAPTER A W5/8" (MANUAL)	1
660	971799 ANCHOR SETTING ADAPTER B W1/4" (MANUAL)	1
661	971800 ANCHOR SETTING ADAPTER B W5/16" (MANUAL)	1
662	971801 ANCHOR SETTING ADAPTER B W3/8" (MANUAL)	1
663	971802 ANCHOR SETTING ADAPTER B W1/2" (MANUAL)	1
664	971803 ANCHOR SETTING ADAPTER B W5/8" (MANUAL)	1
665	944460 TAPER SHANK DRILL BIT D11X100	1
666	944461 TAPER SHANK DRILL BIT D12.3X110	1
667	993038 TAPER SHANK DRILL BIT D12.7X110	1
669	944500 TAPER SHANK DRILL BIT D14.5X110	1
671	944464 TAPER SHANK DRILL BIT D21.5X140	1
672	320859 SYRINGE (BLOW-OUT BULB TYPE)	1
673	303571 DRILL BIT (SDS PLUS) D4.0X110	1
674	303575 DRILL BIT (SDS PLUS) D5.0X110	1
675	303578 DRILL BIT (SDS PLUS) D5.0X160	1
676	303576 DRILL BIT (SDS PLUS) D5.5X110	1
677	303581 DRILL BIT (SDS PLUS) D6.5X160	1
678	303582 DRILL BIT (SDS PLUS) D7.0X160	1
679	303584 DRILL BIT (SDS PLUS) D8.0X160	1
680	303585 DRILL BIT (SDS PLUS) D8.5X160	1
681	303586 DRILL BIT (SDS PLUS) D9.0X160	1
682	303591 DRILL BIT (SDS PLUS) D12.0X160	1
683	303606 DRILL BIT (SDS PLUS) D12.0X260	1
684	303593 DRILL BIT (SDS PLUS) D12.7X160	1
685	303595 DRILL BIT (SDS PLUS) D14.0X160	1
686	303598 DRILL BIT (SDS PLUS) D15.0X160	1

nÂ°	Artikel	Aantal gebruikt
687	303599 DRILL BIT (SDS PLUS) D16.0X160	1
688	303611 DRILL BIT (SDS PLUS) D16.0X260	1
689	303601 DRILL BIT (SDS PLUS) D17.0X160	1
690	303613 DRILL BIT (SDS PLUS) D19.0X260	1
691	303614 DRILL BIT (SDS PLUS) D20.0X260	1
692	303615 DRILL BIT (SDS PLUS) D22.0X260	1
693	303616 DRILL BIT (SDS PLUS) D25.0X450	1
694	319988 DRILL BIT (SDS PLUS) D30.0X450	1



Rev.3