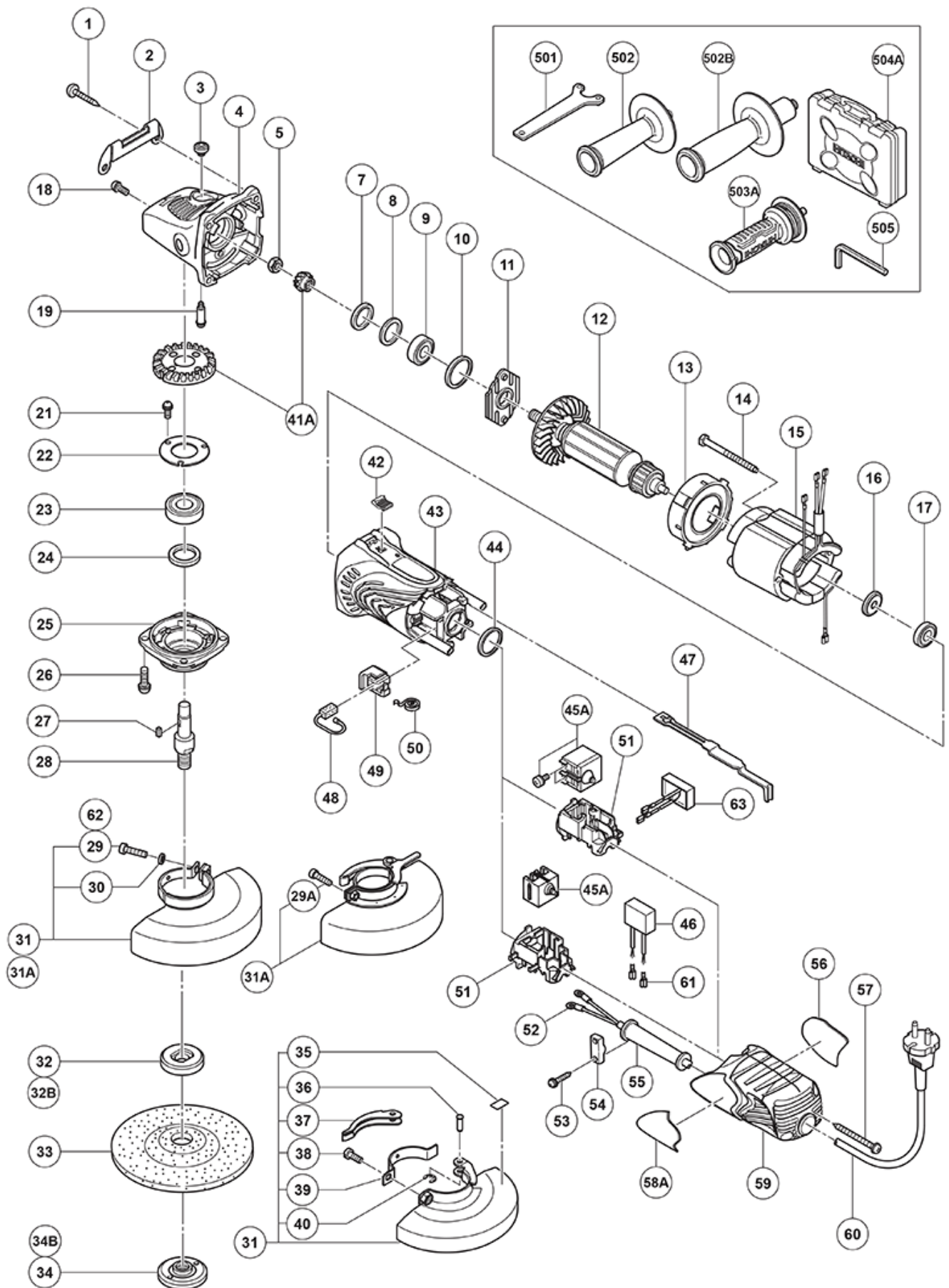


nÂ°	Artikel	Aantal gebruikt
*60	500234Z CORD 5M 2 X 1.0 FOR INA,SUR,MLT H05VV-F (NEW 714500)	1
*60	500435Z CORD 2,5M 2 X 1.0 H05VV-F W/PLUG 13A/250V GBR	1
*60	500447Z CORD 2,5M 2 X 1.0 H05VV-F (OLD 500395Z)	1
*60	500439Z CORD FOR AUS (OLD 500226Z/500411Z)	1
*60	500461Z CORD 3M 2 X 1,0 H05VV-F W/PLUG 16A CEE FORM 2P+E FOR GBR	1
*46	930039 NOISE SUPPRESSOR	1
*60	500240Z CORD FOR USA/CAN	1
*60	500247Z CORD (NEW 714500)	1
*60	500423Z @ CORD 2,5M 2 X 1.0 H05VV-F W/PLUG 13A/250V (OLD 500223Z)	1
*602	938318 WASHER NUT	1
*602	937826Z WASHER NUT	1
*601	938317 RUBBER PAD	1
*601	937825Z RUBBER PAD	1
*502	956633 SIDE HANDLE	1
*12	360734C ARMATURE 110 VOLT	1
*46	994273 NOISE SUPPRESSOR	1
*502	994322 SIDE HANDLE	1
*15	340645D STATOR 120V	1
*15	340645F STATOR 240V	1
*15	340645C STATOR 110 VOLT	1
*15	340645E STATOR 230 VOLT	1
*12	360734U ARMATURE ASS'Y 120V	1
*12	360734E ARMATURE 230-240 VOLT	1
*45A	319319 PUSHING BUTTON SWITCH	1
*15	340932E STATOR 230 VOLT NEW	1
*34	937923P WHEEL NUT 5/8"-11UNC	1
*45A	329057 PUSHING BUTTON SWITCH	1
*28	994302 SPINDLE (B)	1
*32	937817Z WHEEL WASHER	1
*31	320192 WHEEL GUARD ASS'Y (OLD 994321/23)	1
*28	994301 SPINDLE (A)	1
*31	311742 WHEEL GUARD ASS'Y	1
1	320523 TAPPING SCREW D5X25 BLACK	4
2	325053 GUARD PLATE	1
3	301944 PUSHING BUTTON	1
4	321737 GEAR COVER ASS'Y	1
5	949558 NUT M8 (10 PCS.)	1
7	308543 SEAL RING (A)	1

nÂ°	Artikel	Aantal gebruikt
8	980866 WASHER (C)	1
9	629T12 BALL BEARING 629T12DDC3PS2-L	1
10	957754 RUBBER RING (OLD 994299)	1
11	321734 BEARING COVER	1
13	321732 FAN GUIDE	1
14	982021 HEX. HD. TAPPING SCREW D4X70	2
16	315877 DUST SEAL	1
17	608VVM BALL BEARING 608VVC2PS2L	1
18	303255 SEAL LOCK SCREW M4X10 (W/SP WASHER)	2
19	301943 LOCK PIN	1
21	991207 SEAL LOCK SCREW M4X8 (W/SP WASHER)	3
22	936680 BEARING COVER (B)	1
23	6201DD BALL BEARING 6201DDUCMAV2S	1
24	308546 FELT PACKING	1
25	308545 PACKING GLAND	1
26	307046 SEAL LOCK SCREW M5X16 (W/WASHER)	4
27	944109 FEATHER KEY 3X3X8	1
29A	316107 HEX. HOLE BOLT M5X20 (W/WASHERS) (OLD 900162-05020)	1
29	949241 MACHINE SCREW M5X20 (10 PCS.)	1
30	949454 SPRING WASHER M5 (10 PCS)	1
31A	337232 WHEEL GUARD ASS'Y (TOOLLESS TYPE)	1
31A	333537 WHEEL GUARD ASS'Y	1
32B	334456 WHEEL WASHER (C) (OLD 937928Z)	1
33	316822 D. C. WHEELS 125MM A36Q (25 PCS.)	1
34B	339580 WHEEL NUT M14 NEW	1
34B	339579 WHEEL NUT M14 NEW	1
35	311492 LABEL	1
36	311744 SET PIN	1
37	311743 LEVER	1
38	880734 MACHINE SCREW M5X25 BLACK	1
39	311491 SET PIECE (B)	1
40	874759 RETAINING RING (E-TYPE) FOR D2.5	1
41A	329054 GEAR AND PINION SET (OLD 321735)	1
42	314428 SLIDE KNOB	1
43	325050 HOUSING	1
44	321733 RUBBER RING	1
45A	370015 PUSHING BUTTON SWITCH NEW	1
47	370014 SLIDE BAR NEW	1

nÂ°	Artikel	Aantal gebruikt
47	325051 SLIDE BAR	1
48	999088 CARBON BRUSH	2
49	317810 BRUSH HOLDER	2
50	308536 SPRING	2
51	325054 SWITCH HOLDER	1
51	370012 SWITCH HOLDER NEW	1
52	980063 TERMINAL	2
53	984750 TAPPING SCREW (W/FLANGE) D4X16	2
54	937631 CORD CLIP	1
55	953327 CORD ARMOR D8.8	1
56	NAME PLATE	1
57	301815 TAPPING SCREW D4X45 (W/FLANGE)	2
58A	334347 HITACHI LABEL (OLD 325058)	1
59	325052 TAIL COVER	1
61	319320 FASTEN TERMINAL	2
62	949757 HEX.SOCKET HD BOLT M5X20 (10 PCS)	1
63	370013 VARISTOR (B) NEW	1
501	938332Z WRENCH	1
502B	318312 SIDE HANDLE	1
503A	336865 SIDE HANDLE (VIBRATION-ABSORBING) (OLD 325496)	1
504A	325515 CASE	1
505	944458 HEX. BAR WRENCH 4MM	1
603	314062 SANDING DISCS 125MM C-P16 (10 PCS.)	1
604	314063 SANDING DISCS 125MM C-P20 (10 PCS.)	1
605	314064 SANDING DISCS 125MM C-P24 (10 PCS.)	1
606	314065 SANDING DISCS 125MM C-P30 (10 PCS.)	1
607	314066 SANDING DISCS 125MM C-P36 (10 PCS.)	1
608	314067 SANDING DISCS 125MM C-P40 (10 PCS.)	1
609	314068 SANDING DISCS 125MM C-P50 (10 PCS.)	1
610	314069 SANDING DISCS 125MM C-P60 (10 PCS.)	1
611	314070 SANDING DISCS 125MM C-P80 (10 PCS.)	1
612	314071 SANDING DISCS 125MM C-P100 (10 PCS.)	1
613	314072 SANDING DISCS 125MM C-P120 (10 PCS.)	1
614	994312 @ WHEEL WASHER	1
615	994313 WHEEL WASHER (C) FOR D22.2 HOLE	1
616	310338 SUPER WHEEL WASHER	1
617	332787 CUTTING WHEEL GUARD 125 MM WITH BASE	1
618	332788 CUTTING WHEEL GUARD 125 MM W/O BASE	1



Rev.14

MODEL
G13SB3